

Connecting Science to Society: A Network Approach to Improving Science Communication in the Global South



Lynnfield, MA, USA

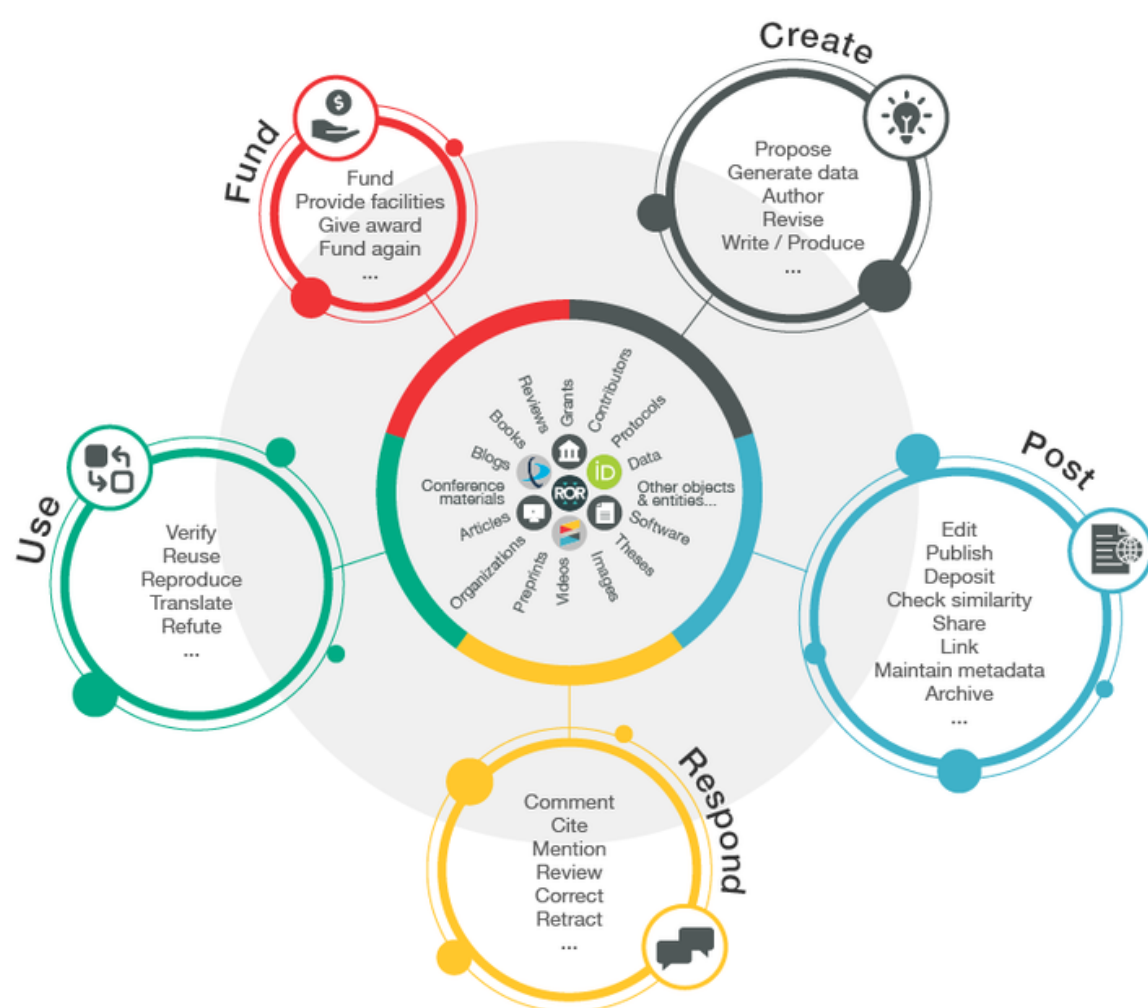
Johanssen Obanda
Community Engagement Manager

We're a not-for-profit membership organization that exists to make scholarly communications better. We rally the community; tag and share metadata; run an open infrastructure; play with technology; and make tools and services—all to help put research in context. It's as simple—and as complicated—as that.

Publishers register metadata with us for the discoverability of research, which we store in a standard way. We make the metadata openly available via APIs so that people and computers can incorporate it in their tools and services that aid research. Researchers benefit from services that help support, progress, publish, and share their work. Learn how to use Crossref APIs at crossref.org/services/metadata-retrieval/

The entire Crossref community is working towards creating the Research Nexus – a rich network of connections and characteristics underpinning scholarly works. We have a number of projects ready to join the pipeline for developing new types of metadata we could include in our schema – so that you can capture and register those in the future.

Research Nexus vision



20,000+
members and affiliates

148
countries

140 million
content items

600 million
queries/month

One billion
DOI resolutions/month

Adopting the POSI Principles

Why POSI?

Supporting Open Research: assess and build trust in open scholarly infrastructure and services that underpin Open Research

Based on real experiences: Inspired by forming ORCID back in the day, by running Crossref, & by setting up ROR.

Well-received by the community: POSI in turn has inspired many to evaluate, reference, build upon, or extend POSI.

A need for broader governance: Existing open infrastructures, metadata, and services need to be trusted and accessible by all parties, all levels of experience, and all geographies.

Identify others to collaborate with: Enables like-minded initiatives to form trusted bonds and share operations, leading to more integrated services for all.

Practical and measurable: Promises, yes. But also a set of practices that orgs can stick to, report on, and be regularly held accountable to.

Balanced: Not a checklist to cherry pick from; each of the 16 balance various risks.

The Principles of Open Scholarly Infrastructure

GOVERNANCE

- Coverage across the research enterprise
- Stakeholder Governed
- Non-discriminatory membership
- Transparent operations
- Cannot lobby
- Living will
- Formal incentives to fulfil mission & wind-down

SUSTAINABILITY

- Time-limited funds for time-limited activities
- Goal to generate surplus
- Goal to create contingency fund
- Mission-consistent revenue generation
- Revenue based on services, not data

INSURANCE

- Open source
- Open data
- Available data
- Patent non-assertion

Who has adopted POSI?

Crossref	OA Switchboard
Dryad	OpenCitations
Datacite	OurResearch
JOSS	ROR
CORE	Europe PMC
OpenAIRE	Society

openscholarlyinfrastructure.org

Cite as Bilder G, Lin J, Neylon C (2020). The Principles of Open Scholarly Infrastructure, retrieved [date], <https://doi.org/10.24343/C34W2H>